

ADDENDUM NO. 1

ROCHESTER CITY SCHOOL DISTRICT

VIRGIL I. GRISSOM – SCHOOL #7

SED Control #: 26-16-00-01-0-007-019

SED DWT #: 26-16-00-01-7-999-019



SEI Project No.: 16-3020

April 7, 2017



GENERAL INSTRUCTIONS:

- Include this Addendum as part of the Construction Documents. This Addendum supplements portions of the original Drawings and Specifications, the intent of which shall remain, except as revised herein.
 - Work described in this Addendum shall be in accordance with the Specifications for like items in remainder of project and complete with all labor and materials included.
-

REVISIONS TO THE PROJECT MANUAL:

SECTION 00 11 13 – Advertisement for Bids – Volume 1

Item AD1-1 **REPLACE the following text to say** “Sealed bids will be received until **2:00 p.m. on April 25th, 2017**, at the Rochester City School District building at 1776 North Clinton Ave., Rochester, NY 14621 by the Rochester Joint Schools Construction Board (“RJSCB” or “Owner”), Attention: Pepin Accilien, Program Director, Tel. 585-512-3807, for the RCSD Virgil I. Grissom – School #7 (“Project”), at which time and place said bids will be publicly opened and read aloud. Questions during the bidding period must be communicated as described in Section 00 21 13 – INSTRUCTIONS TO BIDDERS.”

Item AD1-2 **ADD the following text.**

- a. **An additional pre-bid conference will be held on Friday April 14th, 2017 at 10:00 am at 31 Bryan Street, Rochester NY 14613. (RCSD Virgil I. Grissom – School 7.) It will follow with a building tour of RCSD Virgil I. Grissom – School 7. It is anticipated that the site visit will be completed by 12:00 pm.**

Item AD1-3 **REPLACE the following text** “All pre-bid RFIs must be received no later than 4:00 p.m. on April 11th, 2017” with “All pre-bid RFI’s must be received no later than **4:00 p.m. on April 18th, 2017**.”

SECTION 00 21 13 – Instructions to Bidders – Volume 1

Item AD1-4 **REPLACE the following text in Paragraph 2.01-3 with the following.**

- a. “DE-SCOPE MEETINGS: There will be Prime Contractor de-scope meetings held for all the lowest prospective bidders on between **April 25th and 27th, 2017**, and all contractors need to be available on this date. All prospective winning prime contractors will be required to bring to the de-scope meeting the labor hours they have estimated in their bid”

Item AD1-5 **REPLACE the following text for Paragraph 4.01 with the following.**

- a. “ADDENDA AND INTERPRETATIONS: No interpretations of the meaning of the plans, specifications or other Contract Documents will be made to any bidder orally. Every request for such interpretation should be submitted in writing by e-mail to **school7@rjscb.org**. To be given consideration, such requests must be received on/or before **4:00 p.m. on April 18th, 2017**. Any and all such interpretations and all supplemental instructions will be in the form of written addenda to the Contract Documents and Addenda will be posted and hosted by www.dataflow.com and www.bidnet.com. Any bidder who is preparing a bid based upon the Contract Documents available at various service agencies, is responsible for obtaining the addenda from the hosting service. Failure of any bidder to receive any such addendum or interpretation shall not relieve any bidder from any obligation under this bid as submitted. All addenda so issued shall become part of the Contract Documents.”

SECTION 00 41 16 – Bid Form – Volume 1

Item AD1-6 **REPLACE** section in its entirety. See attachment for revised section dated 4/7/17.

SECTION 00 43 21 – Allowances – Volume 1

Item AD1-7 **REPLACE** text in Paragraph 3.3-b. Schedule of Allowances to the follow:

- a. **“b. Utility Costs (Contract#2) \$25,000”**

SECTION 00 43 22 – Unit Prices – Volume 1

Item AD1-8 **ADD** the following unit costs in Paragraph 3.1.

- a. **UC-09 Remove existing CMU walls – under containment (Per SF)**
- b. **UC-10 Remove existing CMU walls – standard demolition (Per SF)**
- c. **UC-11 New construction CMU walls (4”, 6” & 8”) (Per SF)**

SECTION 00 43 23 – Alternates – Volume 1

Item AD1-9 **REPLACE** section in its entirety. See attachment for revised section dated 4/7/17.

SECTION 00 43 83 – Milestone Schedule and Critical Submittals – Volume 1

Item AD1-10 **REPLACE** section in its entirety. See attachment for revised section dated 4/7/17.

SECTION 01 50 00 – Temporary Construction – Volume 1

Item AD1-11 **ADD** the following text to Paragraph 1.4.

- a. **“E. General Construction Contractor (Contract #2) is responsible for payment of Utilities”**
- b. **“F. It is each contractor’s responsibility to provide and maintain all necessary measures, satisfactory to the CM, for the conservation and minimization of Temporary Utility usage and cost to the Owner.”**

REVISIONS TO THE DRAWINGS:

DRAWING NO. G0002 – Cover Sheet – Volume 1

Item AD1-12 **REPLACE** drawing in its entirety. See attachment for G0002 Rev.1 dated 4/7/17.

DRAWING NO. G0003 – Cover Sheet – Volume 2

Item AD1-13 **REPLACE** drawing in its entirety. See attachment for G0003 Rev.1 dated 4/7/17.

DRAWING NO. G2010 – Code Compliance Plans

Item AD1-14 **REPLACE** drawing in its entirety. See attachment for G2010 Rev.1 dated 4/7/17.

DRAWING NO. C002

Item AD1-15 **REPLACE** drawing in its entirety. See attachment for C002 Rev.1 dated 4/7/17.

DRAWING NO. C102

Item AD1-16 **REPLACE** drawing in its entirety. See attachment for C102 Rev.1 dated 4/7/17.

DRAWING NO. C301

Item AD1-17 **REPLACE** drawing in its entirety. See attachment for C301 Rev.1 dated 4/7/17.

DRAWING NO. C601

Item AD1-18 **REPLACE** detail 14/601 per AD1-C01. See attachment for AD1-C01 dated 4/7/17.

DRAWING NO. A0002

Item AD1-19 **REPLACE** drawing in its entirety. See attachment for A0002 Rev.1 dated 4/7/17.

DRAWING NO. A2000

Item AD1-20 **REPLACE** drawing in its entirety. See attachment for A2000 Rev.1 dated 4/7/17.

DRAWING NO. A2001

Item AD1-21 **REPLACE** drawing in its entirety. See attachment for A2001 Rev.1 dated 4/7/17.

DRAWING NO. A2002

Item AD1-22 **REPLACE** drawing in its entirety. See attachment for A2002 Rev.1 dated 4/7/17.

DRAWING NO. A2003

Item AD1-23 **REPLACE** drawing in its entirety. See attachment for A2003 Rev.1 dated 4/7/17.

DRAWING NO. A2004

Item AD1-24 **REPLACE** drawing in its entirety. See attachment for A2004 Rev.1 dated 4/7/17.

DRAWING NO. A2100

Item AD1-25 **REPLACE** drawing in its entirety. See attachment for A2100 Rev.1 dated 4/7/17.

DRAWING NO. A2101

Item AD1-26 **REPLACE** drawing in its entirety. See attachment for A2101 Rev.1 dated 4/7/17.

DRAWING NO. A2102

Item AD1-27 **REPLACE** drawing in its entirety. See attachment for A2102 Rev.1 dated 4/7/17.

DRAWING NO. A2103

Item AD1-28 **REPLACE** drawing in its entirety. See attachment for A2103 Rev.1 dated 4/7/17.

DRAWING NO. A2104

Item AD1-29 **REPLACE** drawing in its entirety. See attachment for A2104 Rev.1 dated 4/7/17.

DRAWING NO. A2111

Item AD1-30 **REPLACE** drawing in its entirety. See attachment for A2111 Rev.1 dated 4/7/17.

DRAWING NO. A2112

Item AD1-31 **REPLACE** drawing in its entirety. See attachment for A2112 Rev.1 dated 4/7/17.

DRAWING NO. A2113

Item AD1-32 **REPLACE** drawing in its entirety. See attachment for A2113 Rev.1 dated 4/7/17.

DRAWING NO. A2114

Item AD1-33 **REPLACE** drawing in its entirety. See attachment for A2114 Rev.1 dated 4/7/17.

DRAWING NO. A2130

Item AD1-34 **REPLACE** drawing in its entirety. See attachment for A2130 Rev.1 dated 4/7/17.

DRAWING NO. A2131

Item AD1-35 **REPLACE** drawing in its entirety. See attachment for A2131 Rev.1 dated 4/7/17.

DRAWING NO. A2160

Item AD1-36 **REPLACE** drawing in its entirety. See attachment for A2160 Rev.1 dated 4/7/17.

DRAWING NO. A2200

Item AD1-37 **REPLACE** drawing in its entirety. See attachment for A2200 Rev.1 dated 4/7/17.

DRAWING NO. A2201

Item AD1-38 **REPLACE** drawing in its entirety. See attachment for A2201 Rev.1 dated 4/7/17.

DRAWING NO. A2230

Item AD1-39 **REPLACE** drawing in its entirety. See attachment for A2230 Rev.1 dated 4/7/17.

DRAWING NO. A2241

Item AD1-40 **REPLACE** drawing in its entirety. See attachment for A2241 Rev.1 dated 4/7/17.

DRAWING NO. A2400

Item AD1-41 **REPLACE** drawing in its entirety. See attachment for A2400 Rev.1 dated 4/7/17.

DRAWING NO. A2610

Item AD1-42 **REPLACE** drawing in its entirety. See attachment for A2610 Rev.1 dated 4/7/17.

DRAWING NO. A2620

Item AD1-43 **REPLACE** drawing in its entirety. See attachment for A2620 Rev.1 dated 4/7/17.

DRAWING NO. A2630

Item AD1-44 **REPLACE** drawing in its entirety. See attachment for A2630 Rev.1 dated 4/7/17.

DRAWING NO. A2660

Item AD1-45 **REPLACE** drawing in its entirety. See attachment for A2660 Rev.1 dated 4/7/17.

DRAWING NO. A2661

Item AD1-46 **REPLACE** drawing in its entirety. See attachment for A2661 Rev.1 dated 4/7/17.

DRAWING NO. A2662

Item AD1-47 **REPLACE** drawing in its entirety. See attachment for A2662 Rev.1 dated 4/7/17.

DRAWING NO. A2663

Item AD1-48 **ADD** drawing in its entirety. See attachment for A2663 dated 4/7/17.

DRAWING NO. A2664

Item AD1-49 **ADD** drawing in its entirety. See attachment for A2664 dated 4/7/17.

DRAWING NO. A2671

Item AD1-50 **REPLACE** drawing in its entirety. See attachment for A2671 Rev.1 dated 4/7/17.

DRAWING NO. A2700

Item AD1-51 **REPLACE** drawing in its entirety. See attachment for A2700 Rev.1 dated 4/7/17.

DRAWING NO. A2701

Item AD1-52 **REPLACE** drawing in its entirety. See attachment for A2701 Rev.1 dated 4/7/17.

DRAWING NO. A2702

Item AD1-53 **ADD** floor pattern 1 and 2 per AD1-A01. See attachment for AD1-A01 dated 4/7/17.

DRAWING NO. A2703

Item AD1-54 **ADD** floor pattern 1 and 2 per AD1-A01. See attachment for AD1-A01 dated 4/7/17.

DRAWING NO. A2704

Item AD1-55 **ADD** floor pattern 1 and 2 per AD1-A02. See attachment for AD1-A02 dated 4/7/17.

DRAWING NO. A2705

Item AD1-56 **ADD** floor pattern 1 and 2 per AD1-A02. See attachment for AD1-A02 dated 4/7/17.

DRAWING NO. A2800

Item AD1-57 **REPLACE** drawing in its entirety. See attachment for A2800 Rev.1 dated 4/7/17.

DRAWING NO. A2801

Item AD1-58 **REPLACE** drawing in its entirety. See attachment for A2801 Rev.1 dated 4/7/17.

DRAWING NO. A2802

Item AD1-59 **REPLACE** drawing in its entirety. See attachment for A2802 Rev.1 dated 4/7/17.

DRAWING NO. A2803

Item AD1-60 **REPLACE** drawing in its entirety. See attachment for A2803 Rev.1 dated 4/7/17.

DRAWING NO. A2804

Item AD1-61 **REPLACE** drawing in its entirety. See attachment for A2804 Rev.1 dated 4/7/17.

DRAWING NO. A2900

Item AD1-62 **REPLACE** drawing in its entirety. See attachment for A2900 Rev.1 dated 4/7/17.

DRAWING NO. FP2100

Item AD1-63 **REPLACE** drawing in its entirety. See attachment for FP2100 Rev.1 dated 4/7/17.

DRAWING NO. P0003

Item AD1-64 **REPLACE** drawing in its entirety. See attachment for P0003 Rev.1 dated 4/7/17.

DRAWING NO. P0004

Item AD1-65 **REPLACE** drawing in its entirety. See attachment for P0004 Rev.1 dated 4/7/17.

DRAWING NO. P2100

Item AD1-66 **REPLACE** drawing in its entirety. See attachment for P2100 Rev.1 dated 4/7/17.

DRAWING NO. P2101

Item AD1-67 **REPLACE** drawing in its entirety. See attachment for P2101 Rev.1 dated 4/7/17.

DRAWING NO. P2102

Item AD1-68 **REPLACE** drawing in its entirety. See attachment for P2102 Rev.1 dated 4/7/17.

DRAWING NO. P2103

Item AD1-69 **REPLACE drawing in its entirety. See attachment for P2103 Rev.1 dated 4/7/17.**

DRAWING NO. P2160

Item AD1-70 **REPLACE drawing in its entirety. See attachment for P2160 Rev.1 dated 4/7/17.**

ATTACHMENTS:

SPECIFICATIONS:

OO 41 16 Bid Form (dated 4/7/17)

OO 43 23 Alternates (dated 4/7/17)

OO 43 83 Milestone and Critical Submittals (dated 4/7/17)

DRAWINGS:

GENERAL:

G0002 - COVER SHEET (Rev. 1, dated 4/7/17)

G0003 - COVER SHEET (Rev. 1, dated 4/7/17)

G2010 - CODE COMPLIANCE PLANS (Rev. 1, dated 4/7/17)

CIVIL:

C002 - DEMOLITION & EROSION CONTROL PLAN (Rev. 1, dated 4/7/17)

C102 - PLAYGROUND PLAN (Rev. 1, dated 4/7/17)

C301 - UTILITY PLAN (Rev. 1, dated 4/7/17)

AD1-C01 - CONCRETE CURB (dated 4/7/17)

ARCHITECTURAL:

A0002 - ARCHITECTURAL GENERAL INFORMATION AND PARTITION TYPES (Rev. 1, dated 4/7/17)

A2000 - FIRST FLOOR DEMOLITION PLAN AREA A (Rev. 1, dated 4/7/17)

A2001 - FIRST FLOOR DEMOLITION PLAN AREA B (Rev. 1, dated 4/7/17)

A2002 - FIRST FLOOR DEMOLITION PLAN AREA A (Rev. 1, dated 4/7/17)

A2003 - SECOND FLOOR DEMOLITION PLAN AREA B (Rev. 1, dated 4/7/17)

A2004 - THIRD FLOOR DEMOLITION PLAN (Rev. 1, dated 4/7/17)

A2100 - FIRST FLOOR PLAN AREA A (Rev. 1, dated 4/7/17)

A2101 - FIRST FLOOR PLAN AREA B (Rev. 1, dated 4/7/17)

A2102 - FIRST FLOOR PLAN AREA C (Rev. 1, dated 4/7/17)

A2103 - FIRST FLOOR PLAN AREA D (Rev. 1, dated 4/7/17)

A2104 - FIRST FLOOR PLAN AREA E (Rev. 1, dated 4/7/17)

A2111 - SECOND FLOOR PLAN AREA B (Rev. 1, dated 4/7/17)

A2112 - SECOND FLOOR PLAN AREA C (Rev. 1, dated 4/7/17)

A2113 - SECOND FLOOR PLAN AREA D (Rev. 1, dated 4/7/17)

A2114 - SECOND FLOOR PLAN AREA E (Rev. 1, dated 4/7/17)

A2130 - FIRST FLOOR REFLECTED CEILING PLAN AREA A (Rev. 1, dated 4/7/17)

A2131 - FIRST FLOOR REFLECTED CEILING PLAN AREA B (Rev. 1, dated 4/7/17)

A2160 - ROOF PLAN (Rev. 1, dated 4/7/17)

A2200 - EXTERIOR ELEVATIONS (Rev. 1, dated 4/7/17)

A2201 - EXTERIOR ELEVATIONS (Rev. 1, dated 4/7/17)

A2230 - DOOR SCHEDULE AND TYPES (Rev. 1, dated 4/7/17)

A2241 - INTERIOR WINDOW AND STOREFRONT TYPES (Rev. 1, dated 4/7/17)

A2400 - STAIR PLANS AND DETAILS (Rev. 1, dated 4/7/17)

A2610 – PLAN DETAILS (Rev. 1, dated 4/7/17)
A2620 – CEILING DETAILS (Rev. 1, dated 4/7/17)
A2630 – SECTION AND ELEVATION DETAILS (Rev. 1, dated 4/7/17)
A2660 – ROOF DETAILS (Rev. 1, dated 4/7/17)
A2661 – ROOF DETAILS (Rev. 1, dated 4/7/17)
A2662 – ROOF DETAILS (Rev. 1, dated 4/7/17)
A2663 – ALTERNATE NO. 02 – ROOF DETAILS (dated 4/7/17)
A2664 – ALTERNATE NO. 02 – ROOF DETAILS (dated 4/7/17)
A2671 – MILLWORK DETAILS (Rev. 1, dated 4/7/17)
A2700 – ROOM FINISH SCHEDULE (Rev. 1, dated 4/7/17)
A2701 – FLOOR FINISH PREP PLANS (Rev. 1, dated 4/7/17)
A2800 – FIRST FLOOR FURNITURE PLAN – AREA A – FOR REFERENCE ONLY (Rev. 1, dated 4/7/17)
A2801 – FIRST FLOOR FURNITURE PLAN – AREA B – FOR REFERENCE ONLY (Rev. 1, dated 4/7/17)
A2802 – SECOND FLOOR FURNITURE PLAN – AREA A – FOR REFERENCE ONLY (Rev. 1, dated 4/7/17)
A2803 – SECOND FLOOR FURNITURE PLAN – AREA B – FOR REFERENCE ONLY (Rev. 1, dated 4/7/17)
A2804 – THIRD FLOOR FURNITURE PLAN AND SCHEDULE – FOR REFERENCE ONLY (Rev. 1, dated 4/7/17)
A2900 – ALTERNATE NO. 09 – GYMNASIUM STRIPING LAYOUT (Rev. 1, dated 4/7/17)
AD1-A01 – FLOOR PATTERN PLANS (dated 4/7/17)
AD1-A02 – FLOOR PATTERN PLANS (dated 4/7/17)
BACKFLOW PREVENTER:
BFP3000 – BACKFLOW PREVENTER DETAILS AND SCHEDULES (Rev. 1, dated 4/7/17)
PLUMBING:
P0003 – FOUNDATION LEVEL AREA A PLUMBING PLAN (Rev. 1, dated 4/7/17)
P0004 – FOUNDATION LEVEL AREA B PLUMBING PLAN (Rev. 1, dated 4/7/17)
P0003 – FOUNDATION LEVEL AREA A PLUMBING PLAN (Rev. 1, dated 4/7/17)
P2100 – FIRST FLOOR AREA A PLUMBING PLAN (Rev. 1, dated 4/7/17)
P2101 – FIRST FLOOR AREA B PLUMBING PLAN (Rev. 1, dated 4/7/17)
P2102 – SECOND FLOOR AREA A PLUMBING PLAN (Rev. 1, dated 4/7/17)
P2103 – SECOND FLOOR AREA B PLUMBING PLAN (Rev. 1, dated 4/7/17)
P2160 – ROOF PLUMBING PLAN (Rev. 1, dated 4/7/17)
FIRE PROTECTION:
FP2100 – FIRST FLOOR AREA A FIRE PROTECTION PLAN (Rev. 1, dated 4/7/17)

End of Addendum No. 1

SECTION 004116 - BID FORM

1.1 To the Rochester Joint Schools Construction Board ("RJSCB" or "Owner"):

The undersigned proposes to do all the work and furnish all material necessary for RCSD **Virgil I. Grissom – School #7 – Phase 2A of the RSMP** (herein, "Project"). (Use only one bid form per contract being bid):

- **General Construction Contract #2**
- **Plumbing and Fire Protection #3**
- **Mechanical Contract #4**
- **Electrical Contract #5**

1.1.1 In accordance with drawings and specifications therefore and addenda comprising the Contract Documents, for the lump sum of:

_____ Dollars

Amount in Writing

(_____), herein referred to as the "Base Bid."

Figures

1.2 ALLOWANCES

Refer to section 00 43 21 "Allowances" for description of Allowances, where used. **Allowances are to be included in base bid amount and are to be used for items not identified in the contract documents. Unit Price Costs will be used to add or delete scope from allowances when directed by the owner or construction manager.**

1.3 ALTERNATES

1. Alternate Bid #01 – Contract #2 – Platform Design (column removal and "pop-up")

_____ Dollars

(\$_____)

2. Alternate Bid #02 – Contract #2 – Roofing

_____ Dollars

(\$ _____)

3. Alternate Bid #03 – Contract #2 – Window Glazing (base bid to be standard IGU, alternate to be dual glazed with integral blinds)

_____ Dollars

(\$ _____)

4. Alternate Bid #04 – Contracts #2,3,4,5 – Elevator Modernization

_____ Dollars

(\$ _____)

5. Alternate Bid #05 – Contract #2 – Foamed-in-Place thermal insulation in lieu of rigid at exterior

_____ Dollars

(\$ _____)

6. Alternate Bid #06 – Contract #2 – Decorative Metal Screen Replacement

_____ Dollars

(\$ _____)

7. Alternate Bid #07 – Contract #2 – Height of Wall Tile

_____ Dollars

(\$ _____)

8. Alternate Bid #08 – Contract #2 – Playground

_____ Dollars

(\$ _____)

9. Alternate Bid #09 – Contract #2 – Gym Floor

_____ Dollars
 (\$_____)

The total Base Bid, together with any approved Alternates, once accepted and awarded by Owner, shall be referred to as the "Contract Sum." The Contract Sum may be modified in accordance with the General Conditions (Section 007216).

1.4 UNIT PRICES

Refer to section 00 43 22 "Unit Prices", for description of Unit Prices. For Owner's information and for changing quantities of work items from those indicated by the Contract Drawings, upon written instruction from the Architect or Construction Manager, the Contractor shall submit unit prices (which must include all accessories, hangers, labor, materials, fire stopping, terminations, etc.). Unit prices include mark up, profit and overhead. Changes to the work shall be in accordance with the General Conditions (00 72 16).

| Unit Cost # | ITEM NAME | Value | Unit |
|-------------|--|-------|------|
| UC-01a | Abate Fireproofing (Exist. Containment Area) | | SF |
| UC-01b | Abate Fireproofing (New Containment Area) | | SF |
| UC-02 | Abate Roofing Materials (Flashing, Coatings, Cement) | | SF |
| UC-03 | Abate PCB-Containing Window or Soffit Sealant | | LF |
| UC-04 | Add/delete Masonry Repointing | | SF |
| UC-05 | Add/delete Masonry Reconstruction | | SF |
| UC-06 | Add/delete Masonry Cleaning | | SF |
| UC-07 | Add/delete Epoxy Injection at Floors | | LF |
| UC-08 | Add/delete Flooring Underlayment Work | | SF |
| UC-09 | Remove existing CMU walls – under containment | | SF |
| UC-10 | Remove existing CMU walls – standard demolition | | SF |
| UC-11 | New Construction CMU Walls (4", 6", 8") | | SF |
| | | | |
| | | | |
| | | | |

1.5 PROJECT PHASING AND MILESTONES

If awarded the Contract, the undersigned bidder agrees to complete the entire work on or before the milestones and dates as denoted in Section 00 43 83 "MILESTONE SCHEDULE & CRITICAL SUBMITTALS."

1.6 ADDENDA

Receipt of the following addenda to the Contract Documents are acknowledged:

Addendum No. _____ Date _____

Addendum No. _____ Date _____

Addendum No. _____ Date _____

Addendum No. _____ Date _____

1.7 Give the name of each person, firm or corporation interested in the above bid. If the undersigned bidder is:

1. An individual, give full name _____.

2. A partnership under an assumed name, give name of each principal:
_____.

3. A corporation, give full legal name _____
_____.

4. Give the name of each person, firm or corporation other than the bidder having an interest in bids of the Contract proposed to be taken
_____.

2.1 CERTIFICATION OF NON-COLLUSION IN BIDDING

1. By submission of this bid, each bidder and each person signing on behalf of any bidder certifies, and in the case of a joint bid, each party thereto certifies as to its own organization, under penalty of perjury that to the best knowledge and belief:

1. The prices of this bid have been arrived at independently without collusion, consultation, communication, or agreement, for the purpose of restricting competition, as to any matter relating to such prices with any other bidder or with any competitor.

2. Unless otherwise required by law, the prices which have been quoted in this bid have not been knowingly disclosed by the bidder and will not knowingly be disclosed by the bidder prior to opening, directly or indirectly, to any other bidder or to any competitor; and

3. No attempt has been made or will be made by the bidder to

induce any other person, partnership or corporation to submit or not to submit a bid for the purpose of restricting competition.

| | |
|--|--|
| _____ | BY _____ |
| FULL LEGAL NAME OF FIRM OR CORPORATION | AUTHORIZED SIGNATURE |
| _____ | _____ |
| ADDRESS | TYPED NAME OF AUTHORIZED SIGNATURE/TITLE |
| _____ | _____ |
| CITY, STATE, ZIP CODE | TELEPHONE AND FACSIMILE NUMBERS |
| _____ | _____ |
| DATE | E-MAIL ADDRESS |

NOTICE TO BIDDERS

- 3.1 All bid forms shall be signed by the name of the person, firm or corporation submitting the bid, indicating by long-hand signature the person duly authorized to sign in behalf of such person, firm, or corporation and shall contain the business address of the bidder.
- 3.2 Bidders are required to submit unit prices only if required by the specifications.
- 3.3 Owner reserves the right to award contract to include any of the Alternates. Accordingly, bidders are required to bid on all Alternates called for in the specifications. However, Owner reserves the right to waive this requirement.
- 3.4 No bids on different kinds of work may be combined, grouped or added together except to make the lump sum total of work called for under any one contract.
- 3.5 All items on the bid form shall be filled in as called for, and the completed bid form shall be without interlineation, alteration or erasure; and shall not contain a bid or bids, or form of bid or bids, other than called for.

END OF SECTION 004116

SECTION 004323 - ALTERNATES

PART 1 - GENERAL

1.1 RELATED DOCUMENTS

1. Drawings and general provisions of Contract, including General Conditions and Division 01 Specification sections, apply to work of this section.

1.2 SUMMARY

1. This Section specifies administrative and procedural requirements for Alternates.
2. Definition: An Alternate is an amount proposed by Bidders and stated on the Bid Form for certain construction activities defined in the Bidding Requirements that may be added to or deducted from Base Bid amount if the District decides to accept a corresponding change in either the amount of construction to be completed, or in the products, materials, equipment, systems or installation methods described in Contract documents.
3. Bidding Requirements: Bidders for the work of all contracts shall submit lump sum prices for all base bid work of their respective contracts and all required Alternates. All contracts shall be awarded to the qualified bidder with the lowest submitted bid based upon the sum of the base bid and accepted Alternates.
4. Coordination: Coordinate related Work and modify or adjust adjacent Work as necessary to ensure that Work affected by each accepted Alternate is complete and fully integrated into the project.
5. Schedule: A "Schedule of Alternates" is included in Section 3.1.
 1. Include as part of each Alternate, miscellaneous devices, accessory objects and similar items incidental to or required for a complete installation whether or not mentioned as part of the Alternate.

PART 2 - PRODUCTS

Not Used

PART 3 - EXECUTION

3.1 SCHEDULE OF ALTERNATES

RCSD Virgil I. Grissom School No. 7 Renovation and Addition Contracts:

- **General Construction Contract #2**
- **Plumbing and Fire Protection #3**
- **Mechanical Contract #4**
- **Electrical Contract #5**

3.1a ALTERNATE NO. 01, Contract #2 – Platform Design (column removal and “pop-up”)

Base Bid Scope: Provide all platform construction, including stairs and lift as indicated on drawing A2112. Remove masonry to create opening at platform but leave existing horizontal structure and columns.

Alternate #1 Scope: Provide removal of structural columns, removal of upper wall of gym along entire west wall. Installation of a truss to clear span the platform opening and increase height of the opening. New roof and wall construction for new portion of raised structure.

3.1b ALTERNATE NO. 02, Contract #2, #3 – Roofing

Base Bid Scope: Provide fully adhered EPDM roofing per specifications.

Alternate #2 Scope: In lieu of a fully adhered EPDM roofing, provide SBS Modified Bituminous Membrane roofing roofing per specification section

3.1c ALTERNATE NO. 03, Contract #2 – Window Glazing (base bid to be standard IGU, alternate to be dual glazed with integral blinds)

Base Bid Scope: Provide Insulated Glazed Units as indicated on drawings with surface mounted roller shades.

Alternate #3 Scope: Provide Glazed window units with integral blinds and deduct surface mounted roller shades. Glazing types IG-1 and IG-3 to be changed for IG-4 and IG-5. Refer to spec sections for Aluminum windows and Glazing for additional information.

3.1d ALTERNATE NO. 04, Contracts #2,3,4,5 – Elevator Modernization

Base Bid Scope: Provide necessary repair to get elevator back into working order. Pump replacement.

Alternate #4 Scope: Provide modernization of elevator based on specification section 14 24 24 and drawing A2410.

3.1e ALTERNATE NO. 05, Contract #2 – Foamed-in-Place thermal insulation in lieu of rigid at exterior

Base Bid Scope: Provide rigid insulation as indicated on drawings and details.

Alternate #5 Scope: Provide formed in place insulation in lieu of rigid insulation, installed per specifications 072119.

3.1f ALTERNATE NO. 06, Contract #2 –Decorative Metal Screen Replacement

Base Bid Scope: Leave existing metal screens in place, scrap, removal rust, repair anchors or broken components, and paint per Specification section 050170.51.

Alternate #6 Scope: Provide removal and replacement of decorative metal screens per key note #4 on Drawing A2200 and detail 10/A2630. Refer to specification section 057000.

3.1g ALTERNATE NO. 07, Contract #2 –Height of Wall Tile

Base Bid Scope: Provide full height wall tile at all rooms as indicated on drawings and details.

Alternate #7 Scope: Provide reduced height wall tile at select rooms refer to room finish schedule for specific room locations. Tile to be reduce to 5', with aluminum transition top, provide block filler paint at top of wall.

3.1h ALTERNATE NO. 08, Contract #2 –Playground

Base Bid Scope: Playground, and play surface to remain as-is. A \$50,000 allowance to be provided to the district to direct repairs of the existing structure.

Alternate #8 Scope: Provide new playground and play surface as indicated on civil drawings and specifications.

3.1i ALTERNATE NO. 09, Contract #2 –Gym Floor

Base Bid Scope: Gym floor to remain as-is, provide new perimeter base per room finish schedule.

Alternate #9 Scope: Provide refinishing and re-stripping of gym floor as indicated on drawings and specifications.

END OF SECTION 004323

SECTION 004383 - MILESTONE SCHEDULE AND CRITICAL SUBMITTALS

PART 1 - GENERAL

1.1 RELATED DOCUMENTS

- A. Drawings and general provisions of the Contract, including General and Supplementary Conditions and other Division 01 Specification Sections, apply to this Section.
- B. Related Work Described Elsewhere:
 - 1. Agreement, Section CA, General Conditions

1.2 SUMMARY

- A. The work specified in this section includes the requirement to prepare, maintain, and update all detailed schedules as described in this section using the Critical Path Method (CPM). The CPM Schedules shall be prepared in such a manner as to permit the orderly planning, organization, and execution of the Work and be sufficiently detailed to accurately depict all the Work required by the Contract, including all Milestones as described in other sections of the Specifications, or elsewhere in the Contract Documents.

1.3 DEFINITIONS

- A. Contract Float: The number of working days between Contractor's anticipated completion date for early completion of the Work and the corresponding Contract Time.
- B. Expanded Project Schedule Update: expanded detail of a Project Schedule Update in order to further explain the construction sequence or other details.
- C. Look-Ahead Schedule: A schedule that shows planned Work over the next six weeks.
- D. Original Baseline Schedule: The first approved revision 0, Project Schedule.
- E. Guideline Schedule: The schedule included with the contract documents is intended as a guide for bidding purposes. Schedule durations may change from this schedule to depict the actual work flow, but the start, finish and milestone dates will remain the same.
- F. Preliminary Schedule: The Contractor's construction schedule showing the planned Work over the first 120 days following Notice to Proceed.
- G. Project Schedule: The Project Schedule shall represent the Contractor's best judgment and intended plan for the completion of the Work in compliance with the

Contract Documents. It represents the Contractor's first schedule covering the complete duration of Contract Time submitted for review and approval of the CM. Upon approval by the CM, the Project Schedule shall become the Original Baseline Schedule. Subsequent revisions of the Project Schedule shall be Revised Baseline Schedules.

- H. Total Float: The number of working days by which a part of the Work in the Baseline Schedule may be delayed from its early finish dates without extending the Contract Time.
- I. Project Schedule Update: The latest Baseline Schedule updated monthly to reflect actual Work performed, but not logic changes in the Baseline Schedule.
- J. Revised Baseline Schedule: The latest approved Baseline Schedule that reflects logic changes and all approved change orders.

1.4 SUBMITTALS

- A. Project Schedule: Discuss with and obtain the Construction Managers acceptance of the proposed coding, activity-numbering system, screen layout, graphics used to generate the networks and bar charts, and exceptions to the size of the network printed sheets, all prior to submitting the Project Schedule.
 - 1. Submit to the Construction Manager a detailed Project Schedule within 14 calendar days after receipt of the Notice to Proceed using the CPM format, and in both hard copy and electronic format.
 - 2. The Project Schedule shall supersede the Preliminary Schedule upon the Construction Manager acceptance of the Project Schedule.
 - 3. The Project Schedule shall include a written narrative that explains all Work activity durations and describes the plan and approach for meeting interim and final completion milestones. Include as a minimum all: bases and assumptions used in preparing submittals, crew sizes, equipment requirements, anticipated delivery dates, restraints, critical path activities, production rates, production and maintenance shifts, time contingencies to account for weather conditions, permits, long-lead time items, and coordination issues with Construction Manager, Owner, utilities, other contractors or other third-parties. The narrative shall discuss the Contractor's plan for management of the site (e.g., laydown, staging, traffic, etc), and buildup of trade labor.
 - 4. A meeting will be held with all prime contractors upon receipt of the individual Project schedules to coordinate each schedule into one combined Project Schedule.
 - 5. Contractors are required to include on their Schedule of Values costs allocated for second shift, and this will align in detail with the milestone schedule which must be approved by the Construction Manager and Program Manager prior to first billing.

6. A separate superintendent must be assigned for all 2nd shift work, and each prime contractor is required to provide a resume to be reviewed and approved by the Construction Manager and Program Manager prior to that person starting work.
 7. All prospective winning prime contractors will be required to bring to the de-scope meeting the labor hours they have estimated in their bid.
 8. Work force plan must be provided as a submittal and as a part of each prime contractor's first application for payment.
- B. Project Schedule Update and Progress Report: Submit the following on the first working day of each month, updated as of the 25th calendar day of the previous month:
1. Project Schedule Update
 2. Monthly-to-date Progress Report Comprising:
 - a. A narrative of all Work performed that includes the following.
 - b. Work completed since the last update.
 - c. Description of the current critical path, including any changes to the critical path since the last update and an identification of the reasons for the changes.
 - d. Description of problem areas.
 - e. Current and anticipated delays. Include causes thereof and impacts to other activities, milestones, and completion dates. Identify all activities where progress has slipped more than 5 working days since the last schedule update and discuss the cause of the delay or interruption.
 - f. Pending items, such as permits, change orders, and time adjustments, and status.
 3. Contract completion date status. Include the number of days ahead of, or behind all milestone dates and the contract completion date, and the reason(s) for any change(s).
- C. Submit a Project Schedule Update and month-to-date Progress Report in accordance with the foregoing requirements upon submitting any proposed Revised Baseline Schedule. Use a cut-off date for the Project Schedule Update that corresponds to the effective date for the proposed Revised Baseline Schedule.
- D. Look-Ahead Schedule: Submit the two-week look-ahead schedule at least 24 hours prior to the progress meetings, with number of copies submitted, layout, and format acceptable to the Construction Manager.
- E. Time Impact Analysis: Submit in accordance with, and when required by the General Conditions of the Agreement.

- F. All submittals, within the time provided herein and in a form acceptable to the Construction Manager, of schedules, monthly progress reports, schedule updates, and revisions of the Project Schedule are conditions precedent for the Contractor to receive the full amount of each progress payment, less retention and other adjustments. Should the Contractor fail to submit timely, acceptable reports, schedules, updates, or revisions, the Construction Manager may withhold the amount designated in the Schedule of Values from each monthly partial payment estimate. Should the Contractor continue to fail to submit the above mentioned submittals the Construction Manager may, in addition to other retentions or remedies provided by the Contract or by applicable law, withhold 25 percent of each monthly partial payment estimate until acceptable submittals have been received.

1.5 QUALIFICATIONS

- A. The Contractor shall perform the work covered in this section with personnel having at least three (3) years experience in using computer based scheduling on construction projects of the magnitude and complexity of this project.

PART 2 - PRODUCTS (Not Used)

PART 3 – EXECUTION

3.1 SUMMARY

- A. The Schedule shall be constructed and the work performed in accordance with the milestone dates set forth and the coordinated project schedule. Any additional costs for overtime, shift work and/or additional manpower, required to maintain these milestones, will be at each Contractor's expense.

3.2 PROJECT SCHEDULE

- A. Furnish a Project Schedule and participate with the Construction Manager in its review, evaluation and coordination. Such joint review and coordination shall not relieve the Contractor of the sole responsibility for scheduling the Work. Furnish a Project Schedule demonstrating adequate planning and execution of all phases of the Work and which enables the Construction Manager to evaluate progress of the Work. Maintain such Project Schedule so that it shall, at all times, represent the Contractor's planned means, methods, and sequences for performing the Work required under this Contract within the Contract Time specified. Show the following schedule elements in detail:
1. The start and completion of all items of the Work, their major components and milestone completion dates, including Contract milestones.
 2. Mobilization
 3. Submittals and approval of submittals including shop drawings, permits and steps required to obtain permits, safety plans, temporary facilities and utilities, record documents, and operators and maintenance manuals.

- a. Critical submittals shall be tracked independently and include but are not limited to the following: N/A

All construction activities, including the fabrication and delivery of materials or equipment incorporated into the Work, adjacent Work done by others and Work area changes.

4. The number of working days required for completion of each activity and all the Work.
5. Commissioning, punch list and close out.

- B. The Contractor's key personnel involved in preparing the Project Schedule shall initiate and attend one or more meetings upon direction of the Construction Manager to present to, and coordinate with the other prime contractors. Personnel shall be competent and prepared to discuss:

1. The planned logic, content, form, and layout of the activity table (spreadsheet).
2. The bar chart format.
3. Activity identification and coding. Number the initial activity identifications (IDs) by 10s or 100s to allow for the insertion of any future required activities that enhance detail.
4. Presentation and printouts of the Project Schedule.

- C. The Construction Manager will review the proposed Project Schedule and meet with the Contractor's key personnel performing the scheduling to discuss the proposed construction schedule within 21 calendar days of its submission.

- D. The Construction Manager acceptance of the Project Schedule shall not:

1. Imply that the Construction Manager has conducted an exhaustive review or evaluation of the sequencing, logic, or duration of all activities contained therein.
2. Constitute a warranty of its feasibility, suitability, reasonableness, or completeness.
3. Provide a basis for claims occasioned by any future revisions required in the schedule to conform to the Contract requirements.
4. Relieve the Contractor of the sole responsibility for scheduling and performing the work.
5. Relieve the Contractor of sole responsibility for means, methods, and techniques of construction employed.

- E. The Project Schedule initially accepted by the Construction Manager shall be designated as the Original Baseline Schedule. The accepted Original Baseline Schedule shall not be updated, revised, or changed over the Project duration, but shall be used for comparison with the current updated schedule, until a Revised Baseline Schedule is accepted by the Construction Manager.
- F. An activity shall be defined as an element of Work that is measurable and definable and that is necessary to accomplish in order to incrementally achieve progress of the Work as a whole. At any time, the Construction Manager may require additional detail to that previously provided. Float shall not be an activity.
1. Carefully analyze activities comprising the Project Schedule to determine activity durations in units of project working days. Base durations on the labor crews, crafts, equipment, and materials required to perform each activity. Unless supplemented with a detailed linear schedule to indicate production progress, split activities with durations greater than 30 working days into activities no longer than 20 working days, except for summary activities and non-construction activities such as submittal preparation and review, material procurement, and equipment delivery, or as allowed by the Construction Manager.
 2. Clearly identify the critical path on the Project Schedule.
 3. Identify the following as lag activities and include full lag time associated therewith in the duration of the activity. Do not schedule negative lag time.
 - a. Start-to-start and finish-to-finish lag times greater than 1 working day.
 - b. Finish-to-start lag times greater than 1 day.
 - c. Start-to- finish lag times of any kind.

3.3 LIQUIDATED DAMAGES

- A. Critical submittals shall carry liquidated damages of the value listed in 00 72 16 General Conditions.

3.4 DEFINITIONS OF CONTRACT MILESTONES

- A. SUBSTANTIAL COMPLETION:

As determined by the Construction Manager, all work and systems are complete, operational, tested and ready for facility operations and certificate of occupancy. All closeout documentation required by the “Closeout Procedures,” including warranties, certifications, record or ‘as-built’ documents, and operation and maintenance manuals, etc., must be submitted and satisfactory. Substantial Completion will not be recognized by Owner until all Closeout Documents and Submittals are received in full and are satisfactory to Owner’s Representatives.

B. FINAL COMPLETION:

As determined by the Construction Manager, all punch list work is complete; and closeout documentation, warranties, certifications, record documents, and operation and maintenance manuals are approved.

3.5 MILESTONE SCHEDULE

- A.** In order to meet the Substantial Completion dates, all overtime costs for extended work hours, Saturdays (and Sundays when required) must be included in the contractor’s bid; no special consideration will be given to any contractor that fails to include said costs in his/her bid. Extended work days and/or hours will be required to make up lost time due to weather and other unforeseen occurrences.
- B.** A guideline schedule is included in herein as an illustration setting forth goals for milestone activities for the Project and anticipated completion dates. The annexed guideline is for bidding purposes only and may be modified during the course of the Contract. Contractors must complete all Work in a coordinated manner to achieve timely completion. Failure to act in accordance with coordination requirements of the Contract shall subject the responsible Contractor to liquidated damages as specified in the General Conditions and sustained failure to perform as required may be grounds for termination of its Contract.

The following schedule reflects anticipated milestones for the Bid Period:

| | |
|--|------------------------------|
| Advertisement for Bid: | 3/21/17 |
| 2 nd Pre-Conference Walk-Thru | 4/14/17 @ 10am – 11am |
| Contractor’s Prebid RFI Submission Period: | 3/21/17 to 4/18/17 by 4:00pm |
| Bids Received: | 4/25/17 by 2:00 p.m. |
| Descope Meetings: | 4/25/17 – 4/27/17 |
| Bid Award: | 4/27/17 |

The following schedule reflects anticipated milestones before Mobilization:

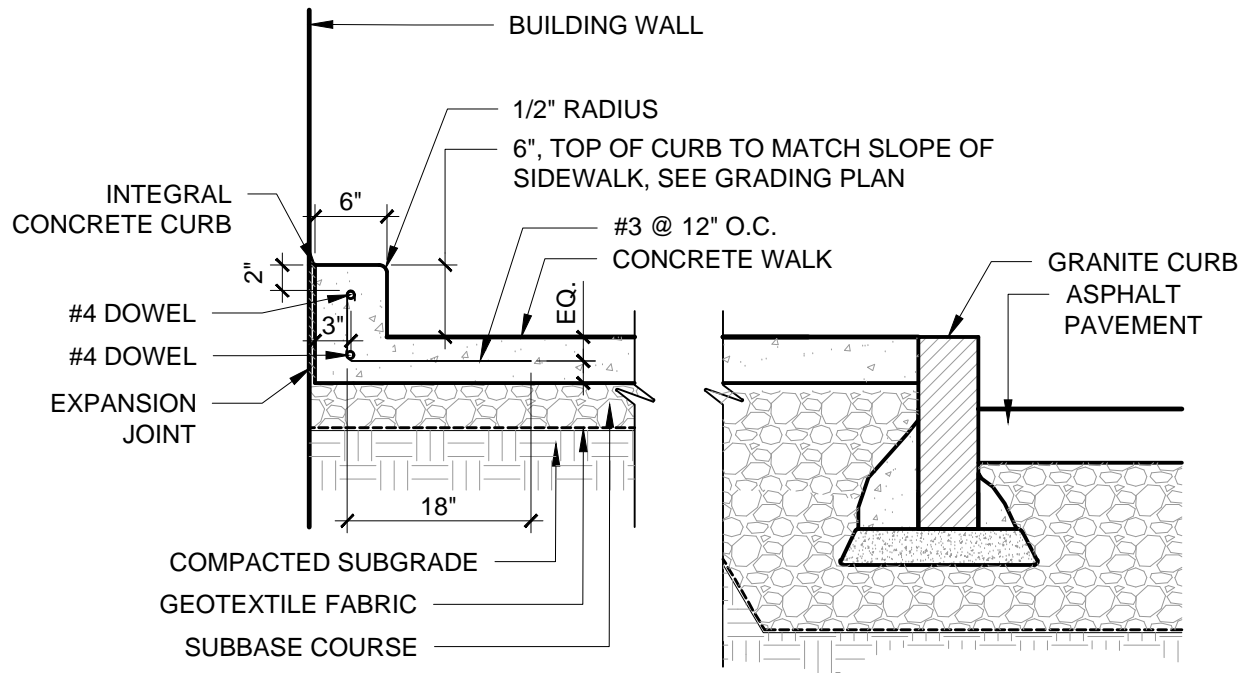
List of Subcontractors (inc. Sub Tier) Submitted by: 5/10/17
Acquire Approved Prime Contractor Bonds and Insurances by: 5/17/17
Acquire Approved Subcontractor Insurances by: 5/31/17

The following schedule reflects anticipated milestone dates (date task to be completed by) for the construction period. **All primes should anticipate that double shift, premium, and second shift work will be required for coordination with the other trades to meet the project milestone dates. All Primes need to understand that this is a fast track project and Time is of the Essence for any and all aspects of this project.**

Mobilize to Site/Temporary Facilities: 5/17/17 - 6/1/17
Substantial Completion Date: 7/27/18
Completion Date: 8/31/18

END OF SECTION 004383

THIS PAGE INTENTIONALLY LEFT BLANK



SEI
design group

585 412-7310 • 224 Mills Road • Rochester, NY 14617
314 435-7447 • 187 99th Road, Suite 304 • Albany, NY 12203
2 Court Street, Suite 404 • Binghamton, NY 13901

ENGAGE • IMAGINE • INSPIRE



Title
ADDITIONS AND ALTERATIONS
ROCHESTER CITY SCHOOL DISTRICT
VIRGIL I. GRISSOM SCHOOL NO. 7
31 BRYAN ST.
ROCHESTER, NY
14613

SED Control 26-16-00-01-0-007-019

SEI Project No. 16-3020

Date: 04/07/17

BID ADDENDUM NO. 01

Sheet Number:

AD1-C01

REF. DWG NO.: C601

14
CONCRETE CURB
601 Scale: 3/4" = 1'-0"

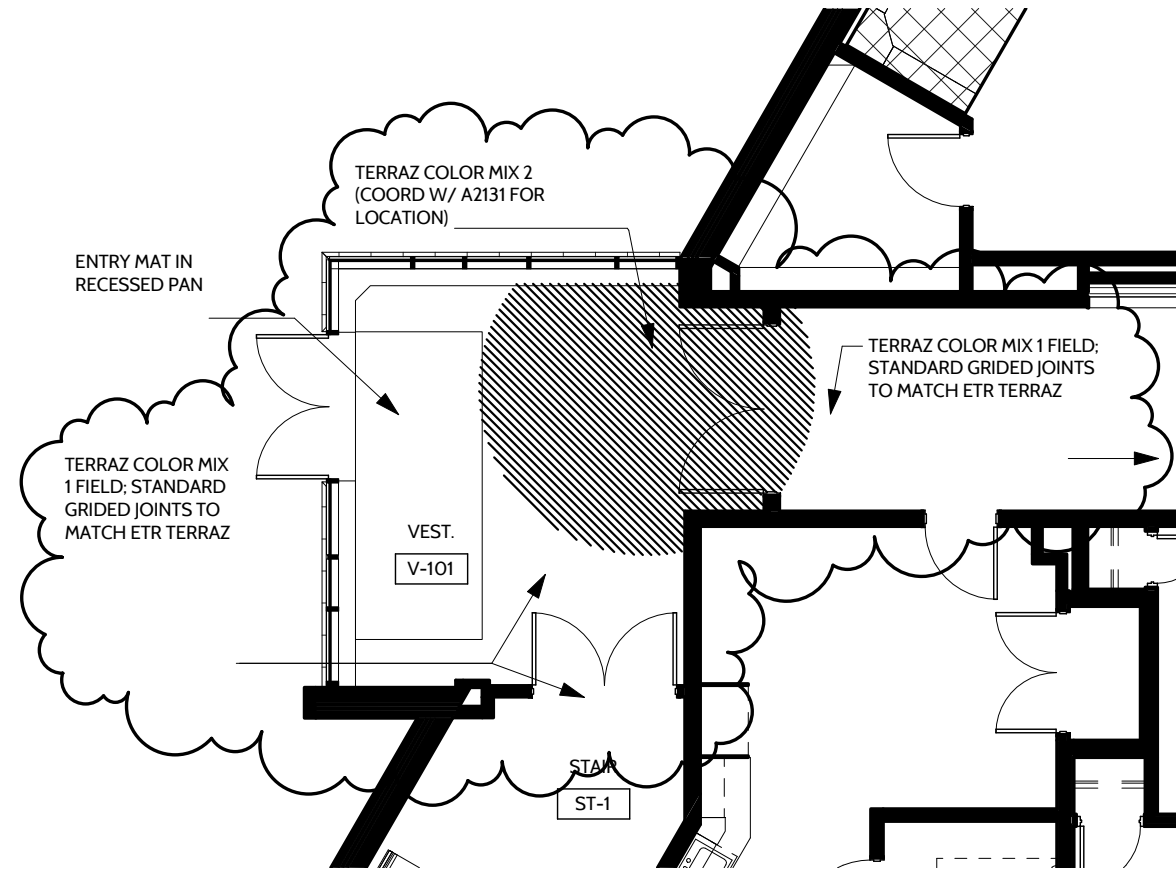




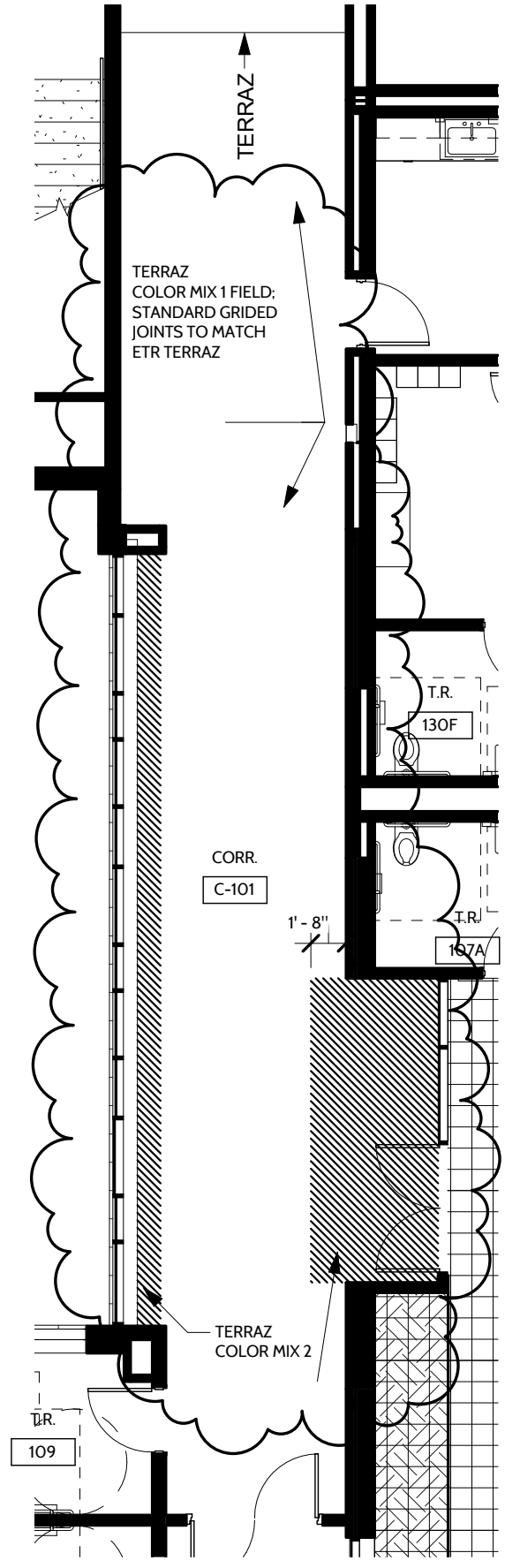
SEI
design group

585.442.7010 - 224 Mill Street - Rochester, NY 14614
518.435.2467 - 187 Wolf Road, Suite 304 - Albany, NY 12205
2 Court Street, Suite 404 - Binghamton, NY 13901

ENGAGE • IMAGINE • INSPIRE



2 PARTIAL FIRST FLOOR FIN PLAN
1/8" = 1'-0"



1 PARTIAL 1ST FLR FIN PLAN
1/8" = 1'-0"

4/7/2017 4:08:47 PM

Title
ADDITIONS AND ALTERATIONS
ROCHESTER CITY SCHOOL DISTRICT
VIRGIL I. GRISSOM SCHOOL NO. 7
31 BRYAN ST.
ROCHESTER, NY
14613

SED Control No. 26-16-00-01-0-007-019
SEI Project No. 16-3020
Date: 04/07/17

FLOOR PATTERN PLANS

Sheet Number:
AD1-A01
REF. DWG NO.: A2702, A2703



SEI
design group

585.442.7010 - 224 Mill Street - Rochester, NY 14614
518.435.2467 - 187 Wolf Road, Suite 304 - Albany, NY 12205
2 Court Street, Suite 404 - Binghamton, NY 13901

ENGAGE • IMAGINE • INSPIRE

Title
ADDITIONS AND ALTERATIONS
ROCHESTER CITY SCHOOL DISTRICT
VIRGIL I. GRISSOM SCHOOL NO. 7
31 BRYAN ST.
ROCHESTER, NY
14613

SED Control No. 26-16-00-01-0-007-019

SEI Project No. 16-3020

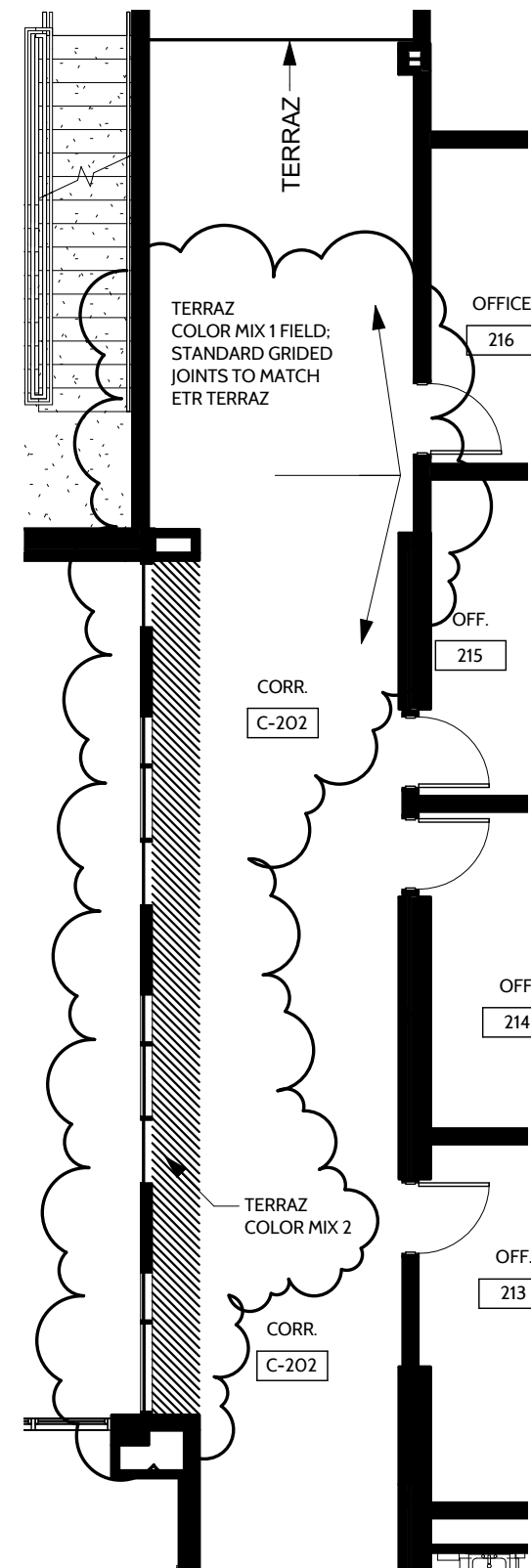
Date: 04/07/17

FLOOR PATTERN PLANS

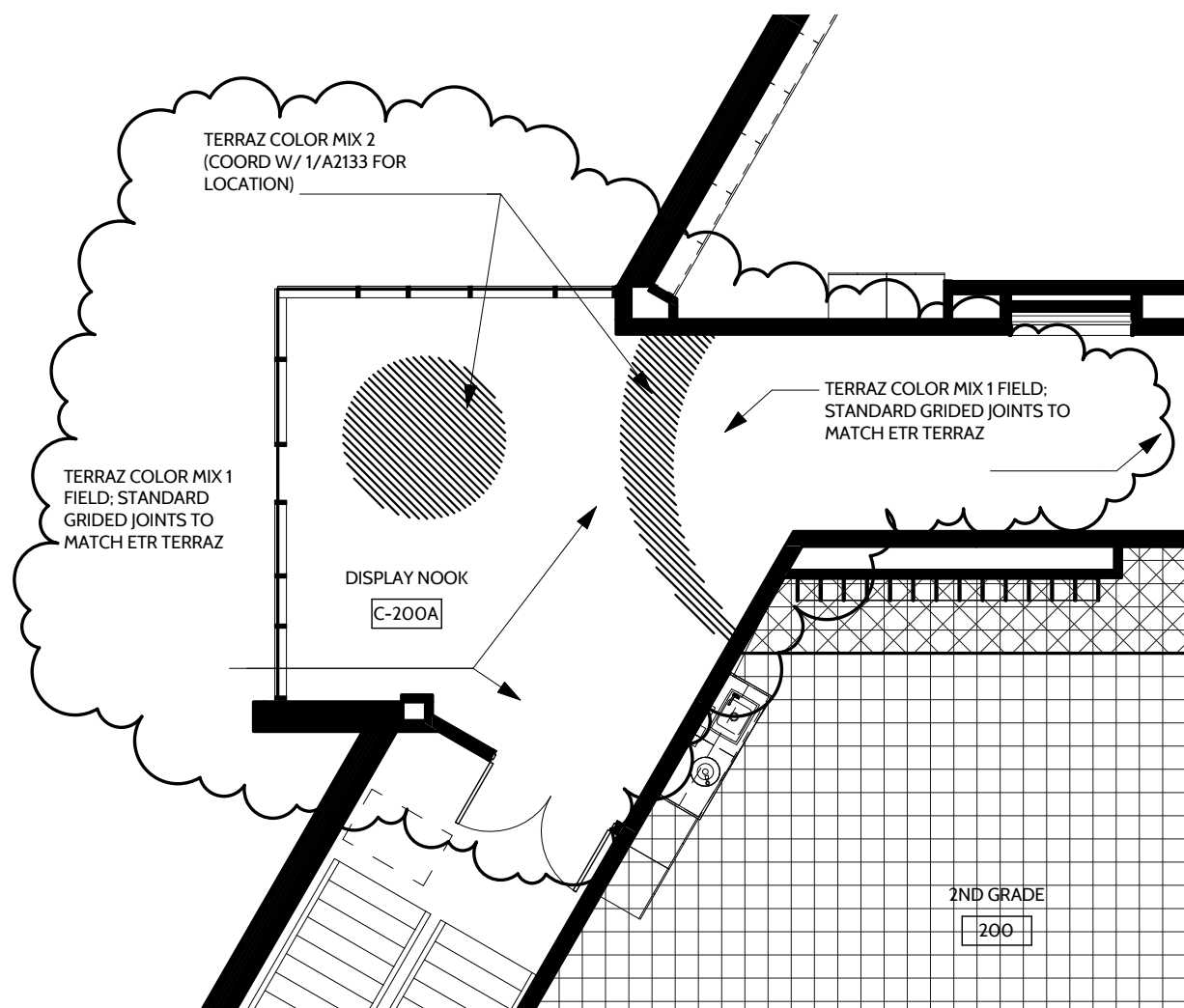
Sheet Number:

AD1-A02

REF. DWG NO.: A2704, A2705



1 PARTIAL 2ND FLR FIN PLAN
1/8" = 1'-0"



2 PARTIAL 2ND FLR FIN PLAN
1/8" = 1'-0"

4/7/2017 4:09:12 PM

